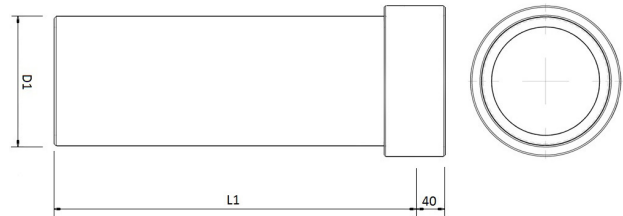


Ventilation ducts made of EPP

EPP-SRGL



Dimensions



Description

Round ventilation duct made of expanded polypropylene (EPP). The most important features of the product are: rigid construction, low weight, easy assembly (female coupling on each element) and good thermal insulation. EPP ducts, used, for example, as sections of the supply and exhaust ventilation systems with heat recovery, do not require additional insulation. The system eliminates the formation of thermal bridges.

EPP ducts are manufactured in 0.5 m and 1 m sections and diameters 125, 150, 160 and 180 mm. The standard wall thickness is 15mm (gray colour). The duct is supplied with one female coupling in the set.

Thermal conductivity: 0.039 W / m * K

Airtightness class: C

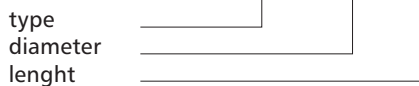
Surface roughness: 0.077 mm

Available materials:

EPP-SRGL-...- EPP (expanded polypropylene)

Product code example:

Product code: **EPP-SRGL - 125 - 0100**



Product code	Diameter [mm]	Wall thickness [mm]	Length [mm]
EPP-SRGL-125-0050	125	15	500
EPP-SRGL-150-0050	150	15	500
EPP-SRGL-160-0050	160	15	500
EPP-SRGL-180-0050	180	15	500
EPP-SRGL-125-0100	125	15	1000
EPP-SRGL-150-0100	150	15	1000
EPP-SRGL-160-0100	160	15	1000
EPP-SRGL-180-0100	180	15	1000

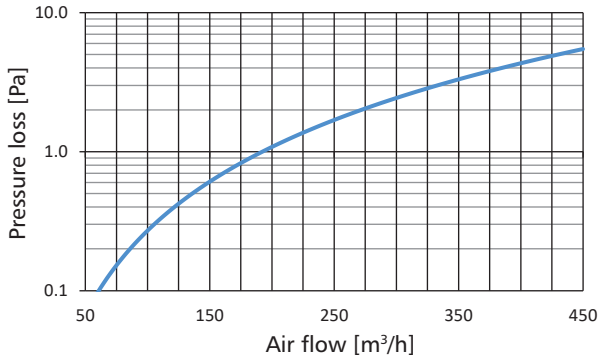
Ventilation ducts made of EPP

EPP-SRGL

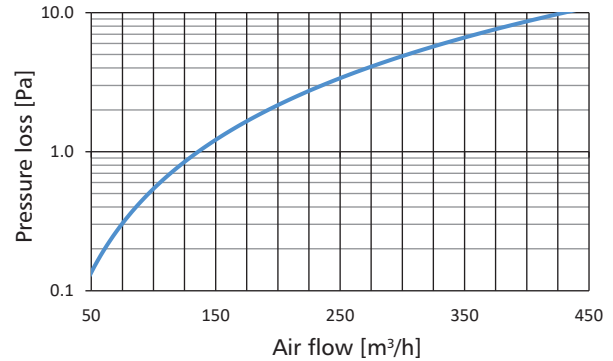
Technical data

Pressure loss chart

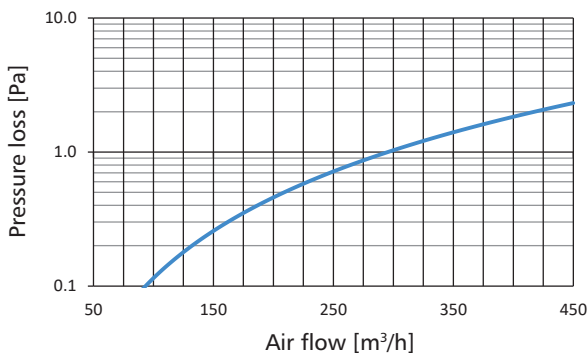
Measurement: **inner diameter: 125mm, length: 0.5m**,
temp: 25°C, P_{atm} : 1004 mBar, ρ (density): 1.173 kg/m³



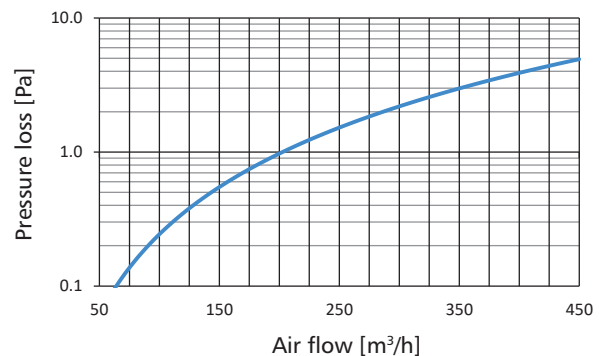
Measurement: **inner diameter: 125mm, length: 1m**,
temp: 25°C, P_{atm} : 1004 mBar, ρ (density): 1.173 kg/m³



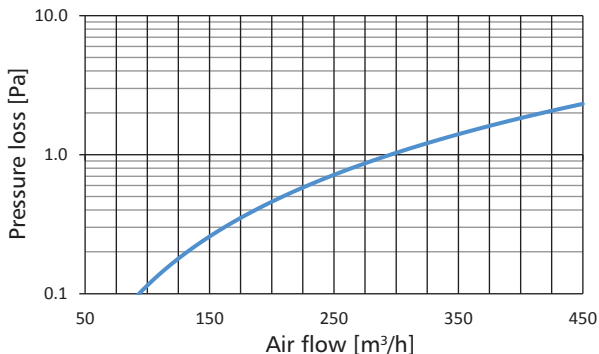
Measurement: **inner diameter: 150mm, length: 0.5m**,
temp: 28.5°C, P_{atm} : 1004 mBar, ρ (density): 1.159 kg/m³



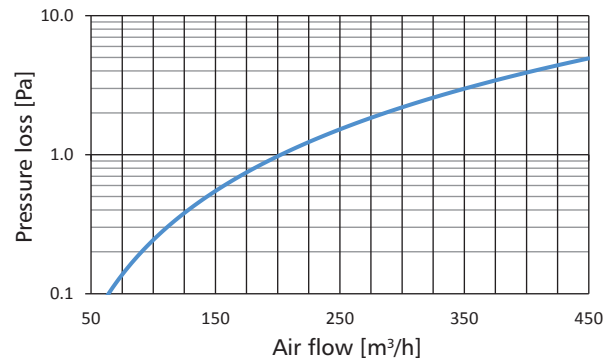
Measurement: **inner diameter: 150mm, length: 1m**,
temp: 28.5°C, P_{atm} : 1004 mBar, ρ (density): 1.159 kg/m³



Measurement: **inner diameter: 160mm, length: 0.5m**,
temp: 30.6°C, P_{atm} : 1004 mBar, ρ (density): 1.151 kg/m³



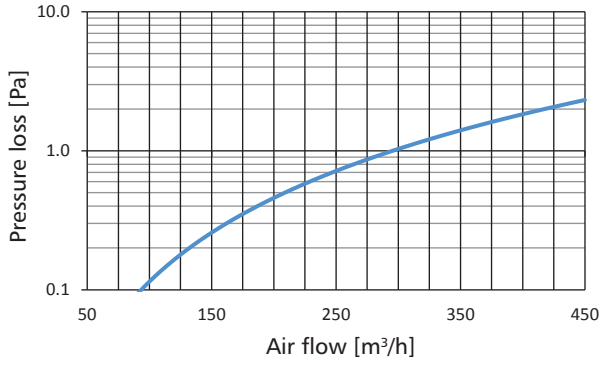
Measurement: **inner diameter: 160mm, length: 1m**,
temp: 30.6°C, P_{atm} : 1004 mBar, ρ (density): 1.151 kg/m³



Ventilation ducts made of EPP

EPP-SRGL

Measurement: inner diameter: 180mm, length: 0,5m, temp: 33.8°C, P_{atm} : 1004 mBar, ρ (density): 1.139 kg/m³



Measurement: inner diameter: 180mm, length: 1m, temp: 33.8°C, P_{atm} : 1004 mBar, ρ (density): 1.139 kg/m³

