

Round silencers

SIBRL



Description

The silencers are delivered with the SPIRAL® system seals in the standard version. The diameter sizes $d_1 > 315$ mm require ordering the NSL male couplings which need to be installed in the silencer before connecting the silencer to the ductwork. The male fittings are available separately. They are not delivered with the silencers. Rock wool thickness inside the silencer: **100 mm for SIBRL-100** - depends on the outer cladding size.

Insulation:

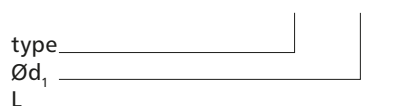
Insulation material: rock wool.
Insulation type: trimmed from reel, flexible.

Available materials - Product code examples

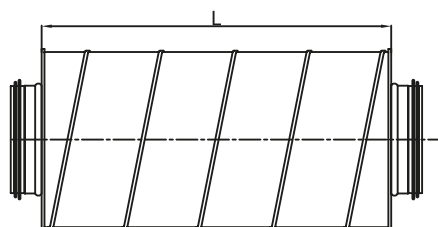
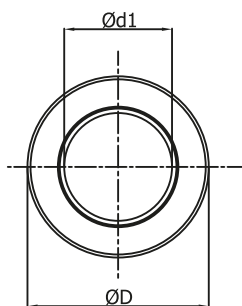
- SIBRL-...-...-... - galvanized steel sheet
- SIBRL-K-...-...-... - 1.4301/304 stainless steel sheet
- SIBRL-K-...-...-...-316L - 1.4404/316L stainless steel sheet
- SIBRL-A-...-...-... - aluminium sheet
- SIBRL-CU-...-...-... - copper sheet

Product code examples

Product code: **SIBRL - aaa - bbb**

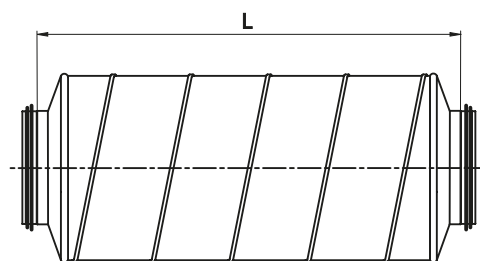
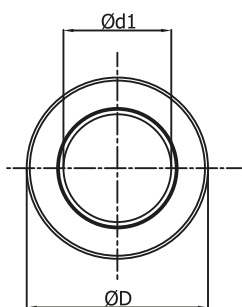


Dimensions



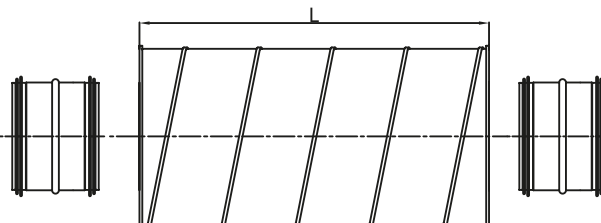
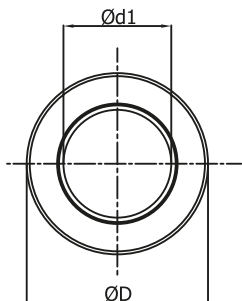
Cross-section for specific types of SIBL and SIBRL, $d_1 \leq 315$ mm.

Not applicable to the diameter sizes: D-100, D-125, D-160, D-200, D-250 with 50 mm thick insulation.



Cross-section of SIBL and SIBRL with 50 mm thick insulation; designed for the diameter sizes: D-100, D-125, D-160, D-200, D-250.

The silencers are fabricated with press-formed covers.



Cross-section for specific types of SIBL and SIBRL, $d_1 > 315$ mm

Round silencers

SIBRL

Dimensions

SIBRL-100 - 100 mm insulation

Description	$\varnothing d_{1, nom}$ [mm]	D_{nom} [mm]	L [mm]	Sound insulation [dB]						Weight [kg]
				at frequency [Hz]						
				125	250	500	1000	2000	4000	
SIBRL 315-1000	315	500	1000	8	20	34	43	52	37	30
315-1200	315	500	1200	11	22	37	46	54	40	35
SIBRL 400-1000	400	600	1000	8	18	30	37	42	28	39
400-1200	400	600	1200	10	22	33	44	44	31	43
400-1500	400	600	1500	12	27	29	47	47	34	53
SIBRL 500-1000	500	710	1000	7	16	26	31	32	20	46
500-1200	500	710	1200	8	17	29	37	37	22	53
500-1500	500	710	1500	9	25	37	45	43	25	67
SIBRL 630-1000	630	900	1000	6	14	21	26	24	16	59
630-1200	630	900	1200	8	16	26	30	27	18	68
630-1500	630	900	1500	9	20	31	37	31	20	87
SIBRL 800-1000	800	1000	1000	5	10	17	21	20	14	84
800-1200	800	1000	1200	6	12	19	24	23	16	99
800-1500	800	1000	1500	7	16	25	30	26	18	112

Dimensions

