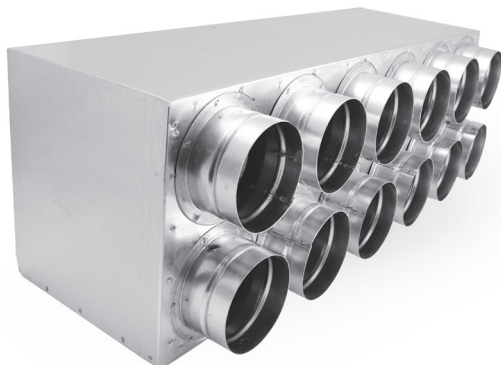


Plenum boxes

FLX-PRO-P...



Description

FLX-PRO-P plenum boxes are connecting pieces for FLX-HDPE and FLX-HDPE-A flexible ducts, which form a distribution system for mechanical installations, including recuperator systems.

Due to small size, they do not require a lot of space or special installation. This allows to save more usable interior space.

FLX-PRO plenum boxes are made of galvanized steel.

On special request, it is possible to make the plenum boxes using stainless steel.

It is possible to order insulated FLX-PRI-P plenum boxes. Plenum boxes are inside insulated with technical insulation with thickness of 9mm. Weldings are made outside the plenum boxes. To preserve the tightness class C it is recommended to use gasket FLX-USZ or FLX-USC.

Note:

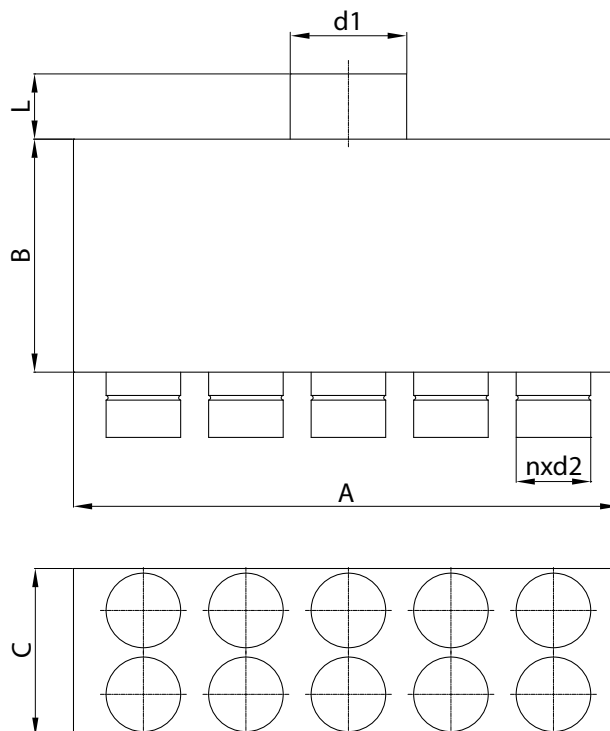
Standard diameter d_1 is made as nippel.

Example

Product code **FLX-PRO-P - 75 - 10**

type _____
 diameter _____
 connections _____

Dimensions



code	A [mm]	B [mm]	C [mm]	L [mm]	d1 [mm]	n [szt.]	d2 [mm]
FLX-PRO-P-63-10	450	160	220	60	200	10	63
FLX-PRO-P-63-12	540	160	220	60	200	12	63
FLX-PRO-P-75-10	500	180	230	60	200	10	75
FLX-PRO-P-75-12	600	180	230	60	200	12	75
FLX-PRO-P-90-10	600	200	240	60	200	10	90
FLX-PRO-P-90-12	720	200	240	60	200	12	90